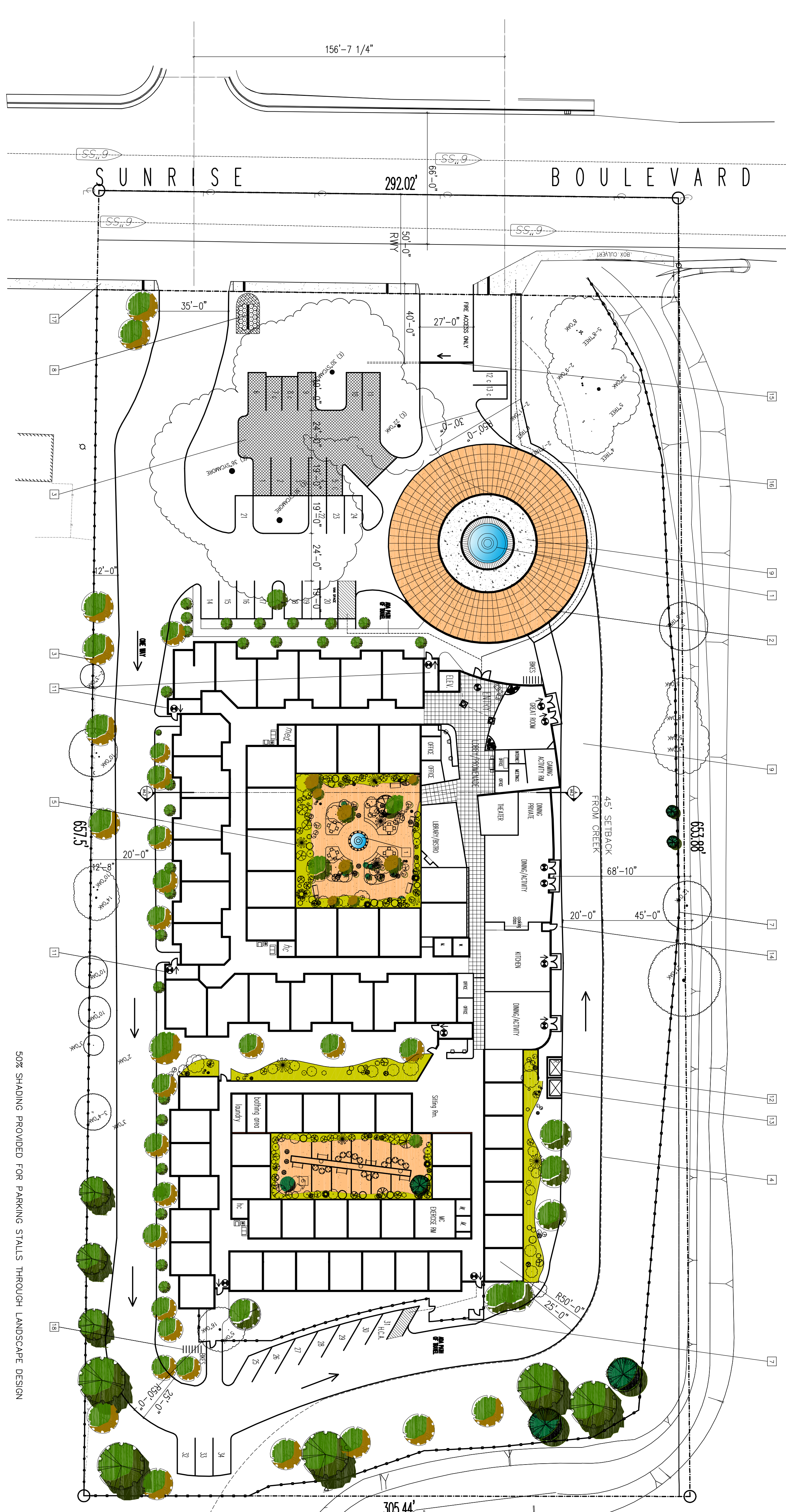


Project Summary

1. SITE AREA	4.55 Acres
2. BUILDING UNITS	65 Units
a. Assisted Living Units	
1. One Bedroom Units	
b. Memory Care Units	34 Units
Total Units	99 units
3. BUILDING SQUARE FOOTAGE	50,000 s.f.
a. First Floor	24,000 s.f.
b. Second Floor	24,000 s.f.
Total Building Square Footage	74,000 s.f.
4. PARKING	33 Spaces
Assisted Living Units and Memory Care Units	
99 Units x 1 space per 3 Unit	
Total Parking Spaces	33
5. CREEK SETBACK	Bank Height 6'-0" x 2.5 + 30'-0" = 45' < 65'-0" O.K.
6. FLOOR AREA RATIO	74,000 s.f. ~ 4.25 Acres
a. Floor Area	
b. Net Site Area	74,000 s.f. / 4.25 Acre = 74,000 s.f. / 185,130 s.f. = 0.39 < 0.4 O.K.

KEY NOTES


- 1 FOUNTAIN
- 2 50' TEXTURED CONCRETE DRIVE
- 3 POROUS CEMENT
- 4 CREEK SET BACK 45'-0"
- 5 COURTYARD & TRELLIS
- 6 INTERIOR COURTYARD
- 7 WROUGHT IRON FENCE
- 8 LOW LIT SIGNAGE
- 9 COLORED STAMPED CONCRETE
- 10 20' WIDE GATE - AUTOMATIC AS PER METRO FIRE REQUIREMENTS
- 11 STAIR EXIT
- 12 TRASH ENCLOSURE
- 13 RECYCLED TRASH ENCLOSURE
- 14 FIRE SPRINKLER ROOM
- 15 FIRE ACCESS ONLY SLIDING GATE WITH LOCK BOX
- 16 PATH OF TRAVEL
- 17 DETACHED SIDEWALK
- 18 BIKE RACKS



50% SHADING PROVIDED FOR PARKING STALLS THROUGH LANDSCAPE DESIGN

1" = 30' - 0"

SITE PLAN
October 6th, 2008



Two Rivers Architects
13405 FOLSOM BLVD., BDC #300
FOLSOM, CALIFORNIA 95630
PHONE: (916) 358-7555
FAX: (916) 358-7556
www.tworiversstudio.com

© 2004 Two Rivers Architects
CONSULTANT

<p>PROJECT TITLE Senior Care of Citrus Heights</p> <p>8220 Sunrise Blvd., Citrus Heights, CA.</p>	<p>CHECKED BY LW</p> <p>SHEET NO. A11.1</p>
<p>DRAWN BY LW</p> <p>PROJECT NO. 1049</p> <p>COMPUTER NO. 03</p> <p>DATE 10-06-08</p>	<p>SHEET TITLE Site Plan Master Plan</p>